

# Prime Exposure & Frontage to Light Rail Commercial Shop - Surfers Paradise

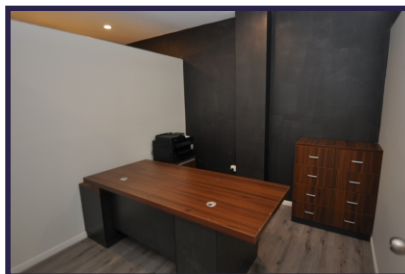


Only  
**\$300,000\***

Area  
**59.4m<sup>2</sup>**

## Shop 4 / 3302 Surfers Paradise Blvd

- This commercial lot has direct frontage to the main thoroughfare through the centre of the Surfers CBD.
- The premises is fully furnished and set up with 3 office areas plus rear kitchenette.
- Positioned on a 1080m<sup>2</sup> site, Surfers Centre Zone, Hx height (unlimited) & RD8 density.



## Prime Future Redevelopment Potential



view more at [www.wrapropertyservices.com](http://www.wrapropertyservices.com)  
For enquiries, professional & confidential service  
**Phone Wayne Robbie on**  
**(07) 5592 3180 or 0419 772 867**

\*Plus GST

