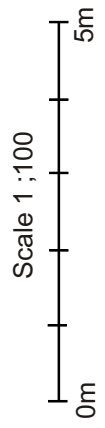
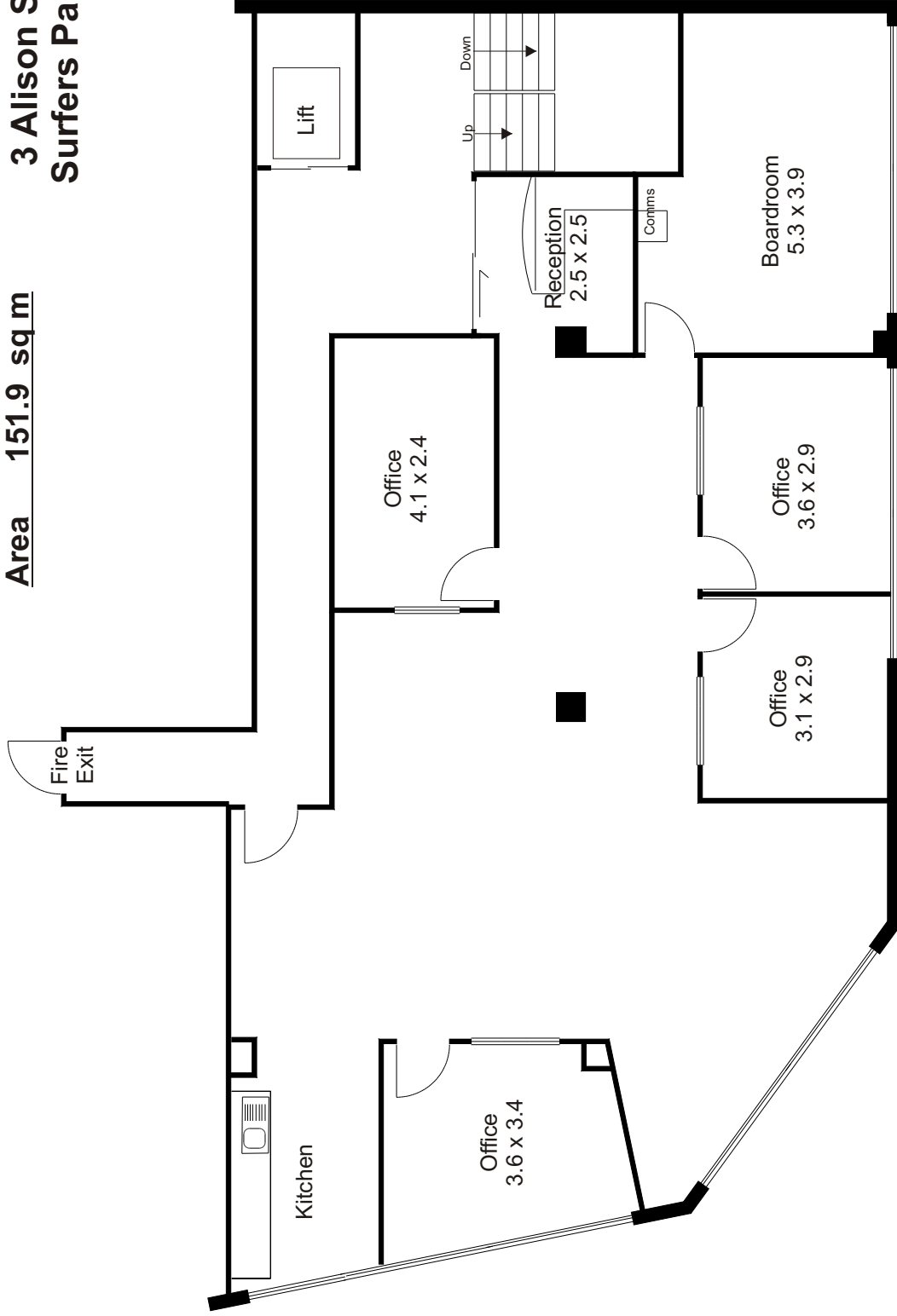


Suite16
Level 4
'Park Rise'
3 Alison Street
Surfers Paradise

Area 151.9 sq m

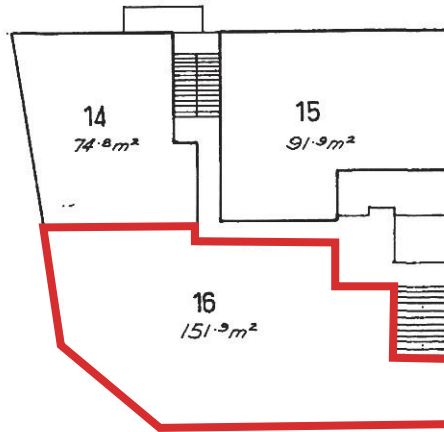


Note While every endeavor has been made to verify the correct detail in this brochure, neither the Agent nor Seller or contracted illustrator accept liability for any error or omission. Prospective Buyers should make their own enquiries and form their own judgement on this property.

© Copyright 2017
Property Onsite
Ph: 0408 833 707

BUILDING UNITS PLAN No. 1072

LEVEL F



Units 14, 15 & 16
Commercial purposes only.



Scale 1:250 (Metric)

Floor Areas are approximate only.

TOSTEE CONSTRUCTION COY. PTY. LTD. }
 by its duly constituted Attorney }
 JOHN WILLIAM McDONALD in the }
 presence of }
J. Campbell McIntosh

TOSTEE CONSTRUCTION COY. PTY. LTD. }
 by its duly constituted Attorney }
 *John M. Donald*

SIGNATURE OF REGISTERED PROPRIETOR.

Alan George
 SIGNATURE OF TOWN CLERK.

GOLD COAST CITY COUNCIL.