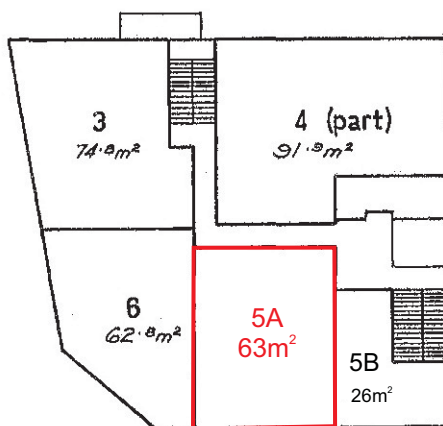


# BUILDING UNITS PLAN No. 1072

LEVEL C



Units 3, 4 (part), 5 & 6  
Commercial purposes only.

Scale 1:250 (Metric)

Floor Areas are approximate only.

TOSTEE CONSTRUCTION COY. PTY. LTD.  
by its duly constituted Attorney  
JOHN WILLIAM McDONALD in the  
presence of:

*John William McDonald*

TOSTEE CONSTRUCTION COY. PTY. LTD.  
by its duly constituted Attorney

..... *John M. Donald* .....

SIGNATURE OF REGISTERED PROPRIETOR.

*Alan G. ...*  
SENIOR TOWN CLERK.

GOLD COAST CITY COUNCIL.