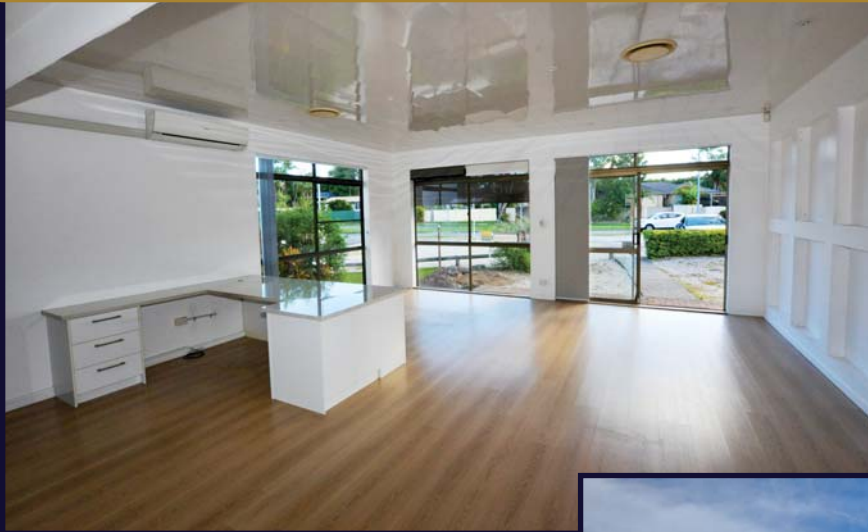


Ideal Location - Main Road Frontage Showroom/Warehouse

Area - 96m²

Prime Exposure



165 Currumburra Rd, Ashmore

- An extremely well presented and airconditioned commercial lot
- The dual front showroom entry plus rear warehouse access allows for a multitude of uses
- Direct access from main 4 lane road with 26,393 average daily passing vehicles.



Easy Access
and
Parking



For Lease - Only \$2,000/month*

view more at www.wrapropertyservices.com

*Plus gst

For enquiries, professional & confidential service

Phone Wayne Robbie on
(07) 5592 3180 or 0419 772 867

