

Prime Corporate Surfers Location

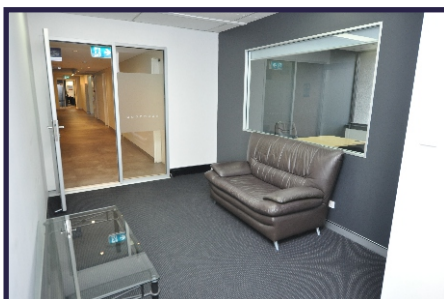


Areas
105m² to 230m²

Directly Opposite
Major Carpark

Level 5, 46 Cavill Avenue

- Recently renovated office suites ready for immediate occupancy.
- Top floor position with superb open outlook, views and natural daylight.
- Ideal central position close to all facilities including restaurants, cafes, shops, bars & light rail.



**Gross Rental - From Only \$3,200 / month + GST
(includes outgoings)***

*excludes utilities



view more at www.wrapropertyservices.com
For enquiries, professional & confidential service
**Phone Wayne Robbie on
(07) 5592 3180 or 0419 772 867**

