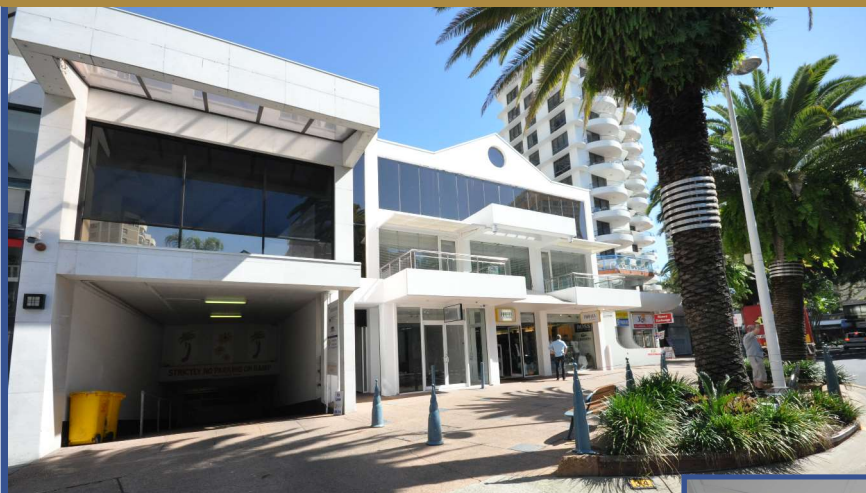


# For Lease - Corporate Offices

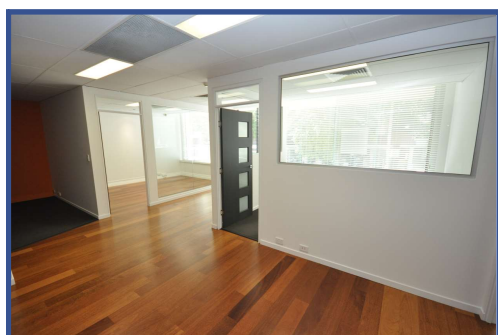


**Ideal Central  
Surfers Location**

**118m<sup>2</sup> - 180<sup>2</sup>  
(whole floor)**

## **Level 1, 34 Orchid Ave**

- Well presented and extensively partitioned with easy access for clients and staff.
- Includes reception, offices, workstation areas, archive & storage, kitchen and balconies.



**Onsite  
Parking  
Available**



**From Only \$2800/month + GST**

**view more at [www.robbyproperty.com](http://www.robbyproperty.com)**

**For enquiries, professional & confidential service**

**Phone Wayne Robbie on**

**(07) 5592 3144 or 0419 772 867**



**Robbie & Associates  
Property Services**

