

# Prime Corporate Location - Surfers Paradise

FOR LEASE - 81m<sup>2</sup> to 130m<sup>2</sup>\*



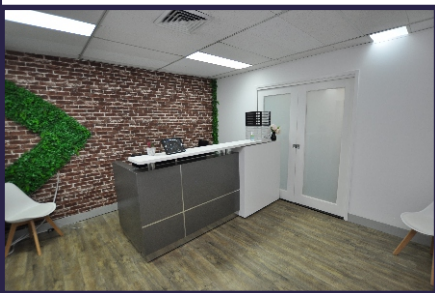
Directly Opposite  
Major Car Park

Close To  
Light Rail

## Level 2 / 46 Cavill Avenue

- A superb location in the heart of the corporate sector and central to all facilities.
- Modern office suites ideal for secure tenants.

Flexible Term  
Available



Gross Rent From Only \$2500 / month + gst  
(includes outgoings)



view more at [www.wrapropertyservices.com](http://www.wrapropertyservices.com)  
for enquiries, professional & confidential service  
Phone Wayne Robbie on  
(07) 5592 3180 or 0419 772 867

\* approximately

