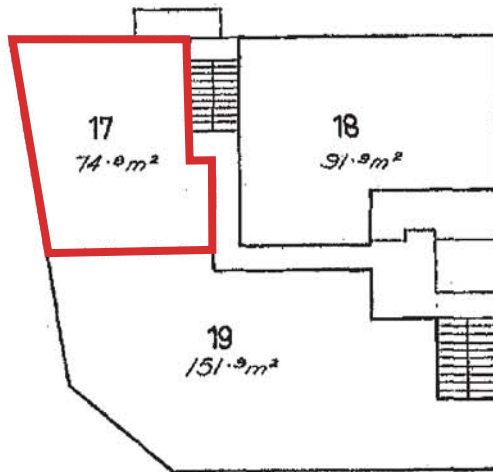


# BUILDING UNITS PLAN No. 1072

## LEVEL 6



Units 17, 18 & 19,  
Commercial purposes only.

Scale 1:250 (Metric)

Floor Areas are approximate only.

TOSTEE CONSTRUCTION COY. PTY. LTD.  
by its duly constituted Attorney  
JOHN WILLIAM McDONALD in the  
presence of

*John William McDonald*

TOSTEE CONSTRUCTION COY. PTY. LTD.  
by its duly constituted Attorney

..... *John M. Donald* .....

SIGNATURE OF REGISTERED PROPRIETOR.

*arrangee*  
SHIREXONTOWN CLERK.

GOLD COAST CITY COUNCIL.