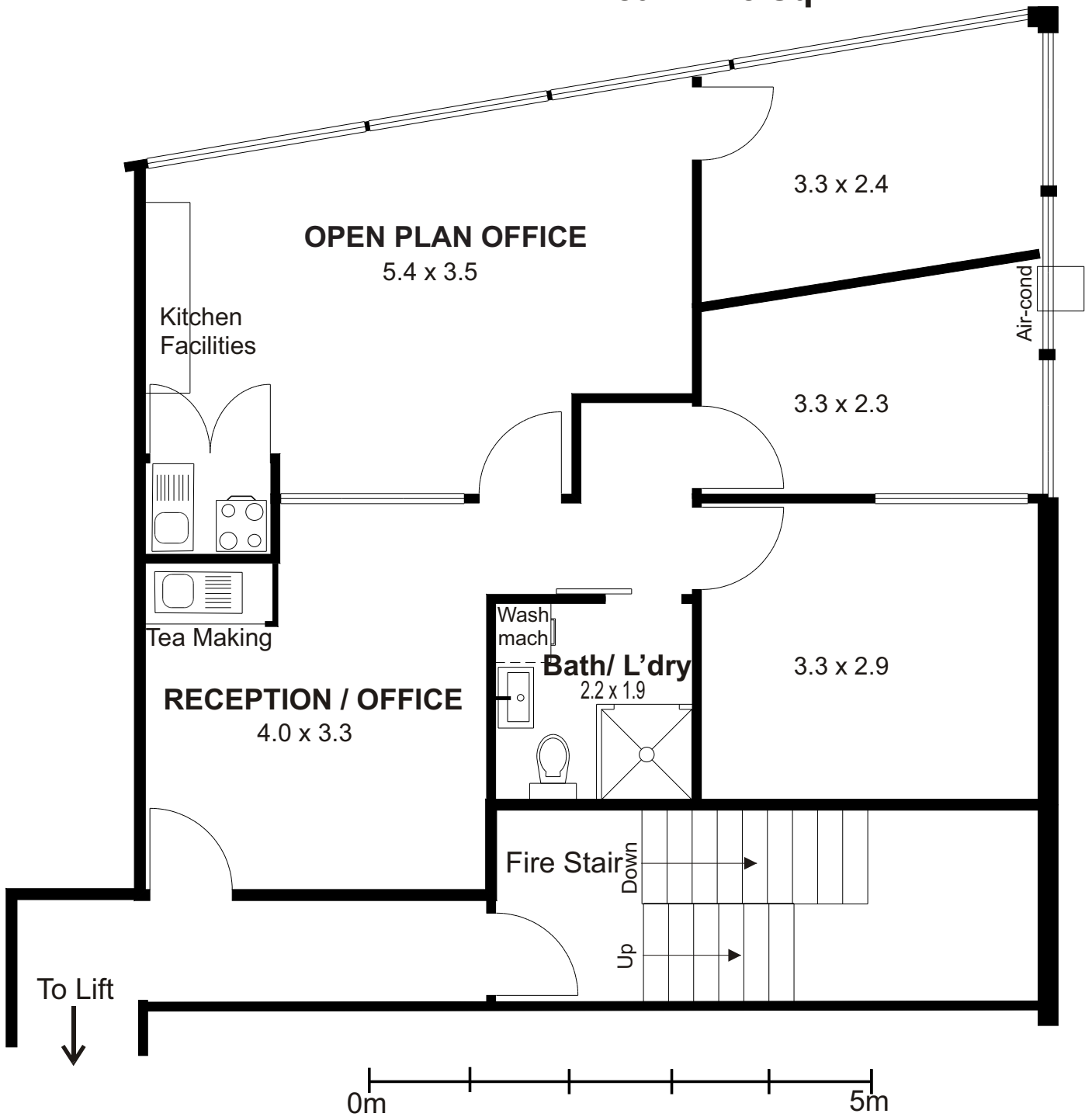


**Level 4**  
**Park Rise Building**  
**3 Alison Street**  
**Surfers Paradise**

**Area 74.8 sq m**



Note While every endeavor has been made to verify the correct detail in this brochure, neither the Agent nor Seller or contracted illustrator accept liability for any error or omission. Prospective Buyers should make their own enquiries and form their own judgement on this property.