

Ideal Chevron Island Location

Open Plan Office Suite



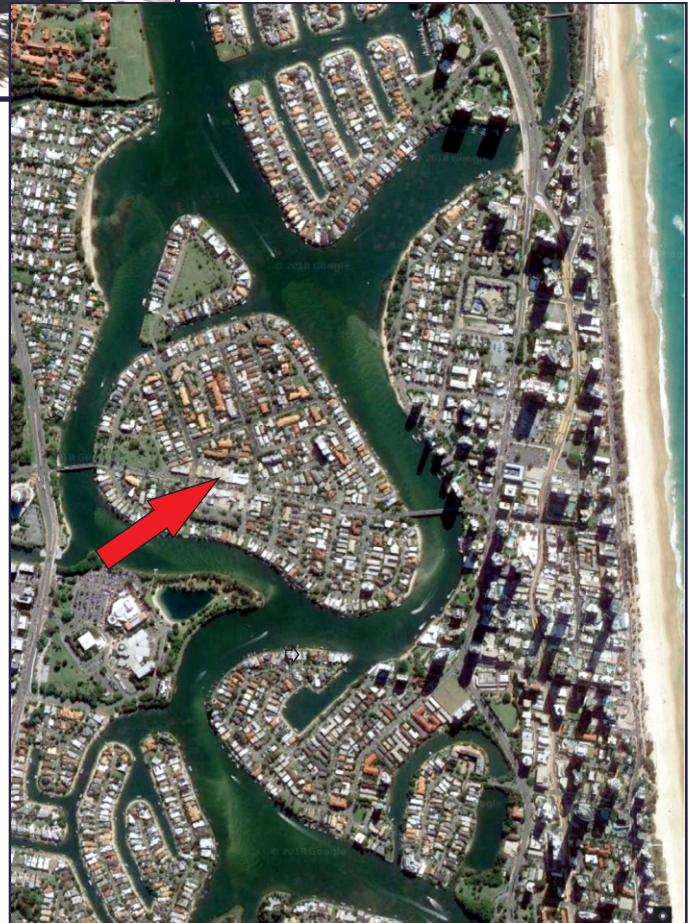
Area
52m²

Excellent Rent
for
Secure Tenant

1st Level, 49-51 Thomas Drive

- Well presented 2 level retail and commercial building in the heart of the Chevron Island business strip.
- Join other long standing businesses - fashion, jewellery, salon, restaurant and professional offices.

**Superb
Central
Position**



Gross Rental - Only \$1100/month + GST

view more at www.wrappropertieservices.com

For enquiries, professional & confidential service

Phone Wayne Robbie on

(07) 5592 3180 or 0419 772 867

