

# Prime Central Ashmore Location For Lease - Only \$1850 / month\*

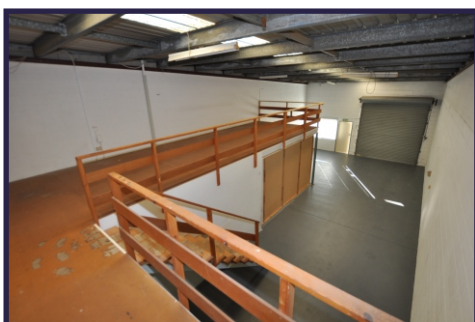


Dual Entry

Area - 112m<sup>2</sup>

## Unit 8 / 185 Currumburra Rd

- An ideal central position close to all facilities & major arterials.
- Clean open warehouse plus mezzanine storage
- 3 phase power, kitchenette and amenities.



Easy Access  
and  
Parking



## Low Rent For Secure Tenant

view more at [www.wrapropertyservices.com](http://www.wrapropertyservices.com)

\* Plus GST

For enquiries, professional & confidential service

Phone Wayne Robbie on

(07) 5592 3180 or 0419 772 867

