

Prime Location - Central Surfers Paradise

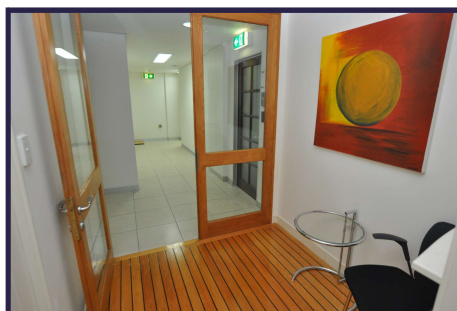
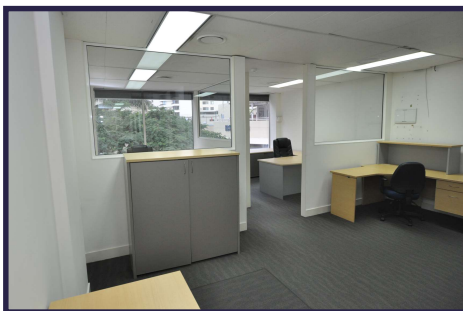


**Boutique
56m² Office**

**Includes
2 Car Parks**

Lot 20, Level 2, 46 Cavill Avenue

- This extremely well presented fully setup office is ready for immediate occupancy.
- Superb 4-5 person office with reception, 2 offices, boardroom & open workstation area.



**Easy Access
& Parking**

Absolute Gift - \$1860/month + gst (includes outgoings)

view more at www.wrappropertieservices.com

For enquiries, professional & confidential service

Phone Wayne Robbie on

(07) 5592 3180 or 0419 772 867

