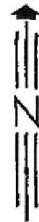
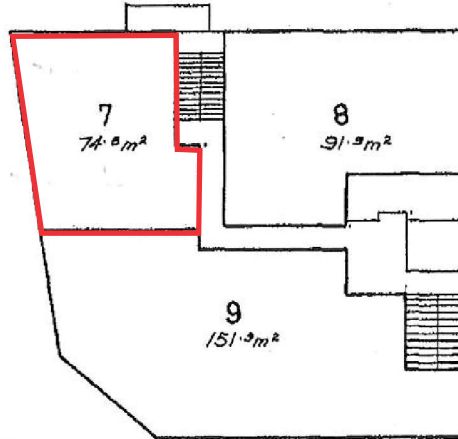


# BUILDING UNITS PLAN No. 1072

## LEVEL D



Units 7, 8, & 9  
Commercial purposes only

Scale 1:250 (Metric)

Floor Areas are approximate only.

TOSTEE CONSTRUCTION COY. PTY. LTD.  
by its duly constituted Attorney  
JOHN WILLIAM McDONALD in the  
presence of:

*DE Campbell Solicitor*

TOSTEE CONSTRUCTION COY. PTY. LTD.  
by its duly constituted Attorney

..... *John W. McDonald* .....

SIGNATURE OF REGISTERED PROPRIETOR.

*Alan G. G. G.*  
REGISTERED TOWN CLERK.

GOLD COAST CITY COUNCIL.