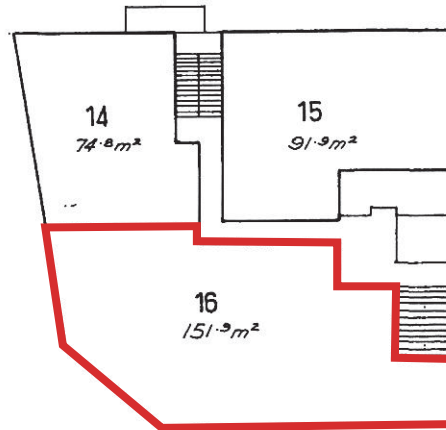


BUILDING UNITS PLAN No. **1072**
LEVEL F



Units 14, 15 & 16
Commercial purposes only.

Scale 1:250 (Metric)

Floor Areas are approximate only.

TOSTEE CONSTRUCTION COY. PTY. LTD.
by its duly constituted Attorney
JOHN WILLIAM McDONALD in the
presence of
DE Campbell McIntosh

TOSTEE CONSTRUCTION COY. PTY. LTD.
by its duly constituted Attorney
..... *John M. Donald*

SIGNATURE OF REGISTERED PROPRIETOR.

accangoree
SEAL OF TOWN CLERK.

GOLD COAST CITY COUNCIL.